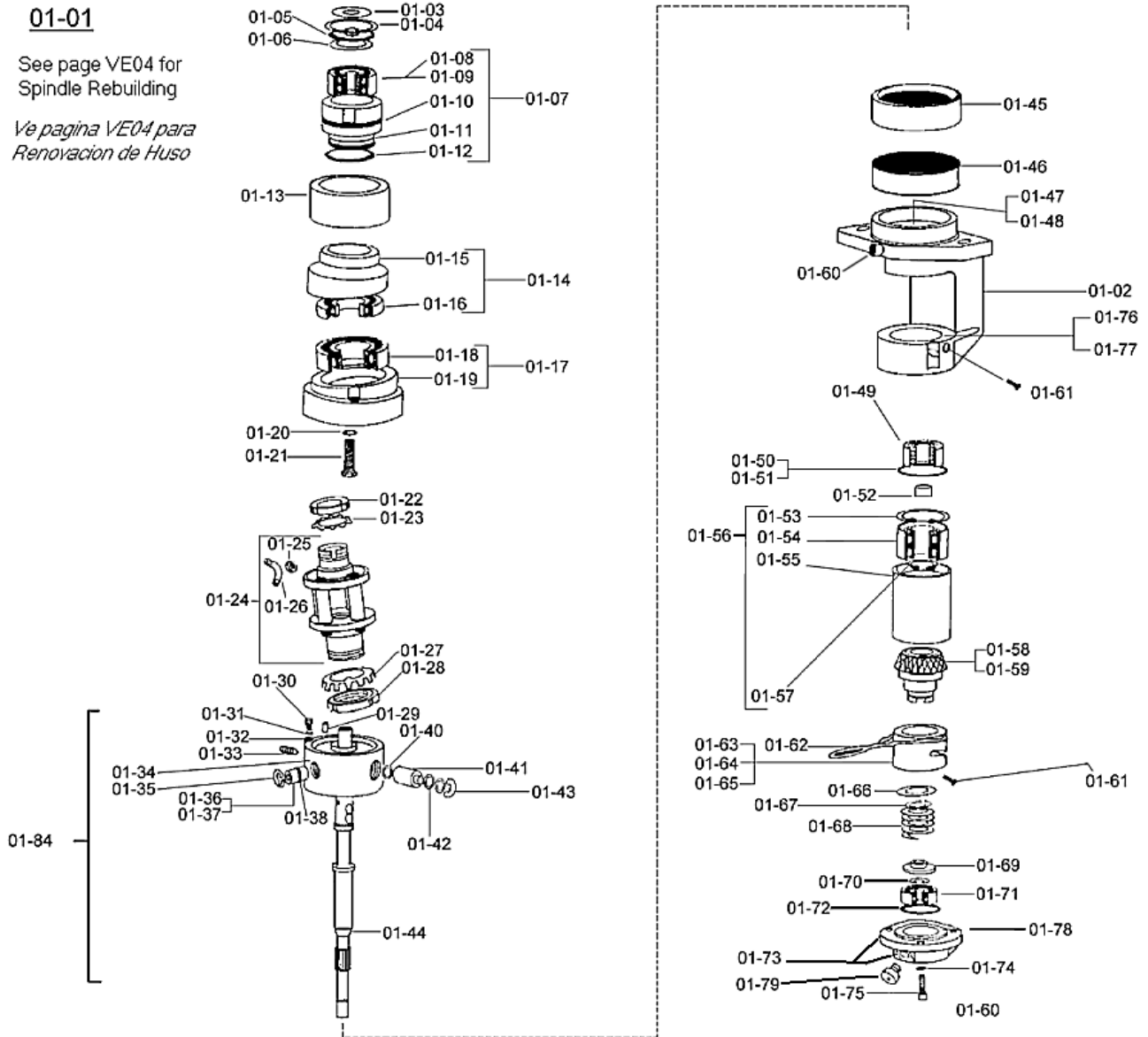


01-01

See page VE04 for Spindle Rebuilding

Ve pagina VE04 para Renovacion de Huso



EPIC PRECISION PARTS FOR VERDOL "R" SPINDLES, EXPANDED VIEW

PARTES EPIC DE PRECISION PARA HUSOS "R" DE VERDOL, ESQUEMA EXTENDIDA

Epic Enterprises, Inc., P.O. Box 979, Southern Pines, NC 28388-0979 USA

Telephone Toll Free 800-648-7273 or 910-692-5441 Outside USA

Fax Toll Free 888-692-4147 or 910-692-4147 Outside USA

Website: <http://www.epicenterprises.com> E-Mail: epic@epicenterprises.com



| Position | OEM Ref. Nos. | Epic No. | Description |
|-----------------|---|-----------------|--|
| VE01-01 | 151964A01 | EE304840 | Spindle Assembly, R <i>Conjunto Completo de "R" Huso</i> |
| VE01-01A | 151964R | EE302930 | Spindle, Rebuild Customer R CALL EPIC FOR PRICING <i>Reedificado Completo de Huso "R" Cliente EPOPEYA DE LA LLAMADA PARA TASAR</i> |
| VE01-01B | (152096A) (151803) | EE304940 | Spindle, Rebuild Customer Assembly U to R CALL EPIC FOR PRICING <i>Conversion de Huso "U" a "R" EPOPEYA DE LA LLAMADA PARA TASAR</i> |
| VE01-01C | (152096A) (151522H) | EE304920 | Spindle, Rebuild Customer Assembly G to R CALL EPIC FOR PRICING <i>Conversion de Huso "G" a "R" y Renovar Huso Completo EPOPEYA DE LA LLAMADA PARA TASAR</i> |
| VE01-01D | (152389A01) (152280AR) | EE304842 | Spindle, Rebuild Customer RM Assembly Complete CALL EPIC FOR PRICING <i>Renovar RM Huso de Cliente EPOPEYA DE LA LLAMADA PARA TASAR</i> |
| VE01-01F | (152389A01) (152280AR) | EE304842-1 | Spindle Assembly, RM, Complete, Rebuilt for Exchange CALL EPIC FOR PRICING <i>Conjunto Completo de "RM" Huso para Cambio EPOPEYA DE LA LLAMADA PARA TASAR</i> |
| VE01-02 | (151981A00) (151966A03) | EE340036 | Housing, R and RM Spindle <i>Caja para Huso R y RM</i> |
| VE01-02A | (VD000211) (151791) (151274) (151966A) | EE304900 | Housing, Spindle, Converted U to R or G to R (Epic property) <i>Conversion de Caja de Huso de "U" o "G" o "R"</i> |
| VE01-02A | (VD000211) (151966A) (151791) (151274) | EE305556 | Housing, Spindle, Converted U to R or G to R, Exchange (CALL EPIC FOR PRICING) <i>Conversion de Caja de Huso de "U" o "G" o "R" para</i> |
| VE01-02A | 152152A 151981A00 151966A03 | EE340036-1 | Housing, R and RM Spindle with Dust Ring <i>Caja para Huso R y RM con Protector de Polvo</i> |
| VE01-03 | 119094 | EE302100 | Washer, Rubber <i>Arandela de Goma para Discos Ceramicos De Tension</i> |
| VE01-04 | 558044A | EE304045 | Ring, Internal Retaining (30I) <i>Retenador Internal, 30mm</i> |
| VE01-05 | 119093D | EE302080 | Washer, Steel for 4200 Bearing <i>Arandela de Acero para Rodiamento 4200</i> |
| VE01-06 | (VD000062) (119098A) | EE302120 | Washer, Seal (Spacer) <i>Arandela Selladura (Espaciador)</i> |
| VE01-07 | 151731S | EE302660 | Bearing, Top Assembly, (Steel Cage) <i>Conjunto de Rodiamento Superior con Jaula de Acero</i> |



| Position | OEM Ref. Nos. | Epic No. | Description |
|-----------------|-------------------------------|-----------------|--|
| VE01-08 | (569027SS) | EE304202-1 | Bearing, Top, Steel Cage, 5200, without seals (Note: Do not use EE302120 Washer. And, Use EE302081 modified washer in place of EE302080 washer). <i>Rodamiento Rodillos 5200 Superior con Jaula Acero</i> |
| VE01-09 | (569027SS) | EE304202 | Bearing, Top, 5200, Double Seal <i>Rodamiento Superior de Rodillos 5200C3-RR</i> |
| VE01-10 | 318598 581013B R24PB701 | EE304500 | O-Ring, Top Bearing Upper <i>Anillo "O" Superior</i> |
| VE01-11 | 151729B00 | EE302600 | Housing, Top Bearing <i>Caja para Rodiamento Superior</i> |
| VE01-12 | 581011C R20PC851 | EE304460 | O-Ring, Top Bearing Lower <i>Anillo "O" for Rodamientc</i> |
| VE01-13 | 151138A | EE302480 | Cover, Dust <i>Protector de Polvo</i> |
| VE01-14 | 151900 | EE302860 | Bearing, Upper Oblique Assembly <i>Conjunto Superior de Rodiamento Obliquo</i> |
| VE01-15 | 151897 | EE302820 | Housing, Upper Oblique Bearing <i>Caja Superior de Rodiamento Obliquo</i> |
| VE01-16 | 569013S | EE304120 | Bearing, Upper Oblique, 16004C3 <i>Rodamiento de Bolas 16004C3 para Caja Superior Oblicue</i> |
| VE01-16A | Not Applicable | EE304120-2 | Bearing, Upper Oblique, 16004C3, SKF <i>Rodamiento de Bolas 16004C3 para Caja Superior Oblicue, SKF</i> |
| VE01-17 | 151899 | EE302840 | Bearing, Lower Oblique Assembly <i>Conjunto Bajo de Rodiamento Obliquo</i> |
| VE01-18 | 569016S 6005C3 | EE304140 | Bearing, Lower Oblique, 6005C3 <i>Rodamiento de Bolas 6005C3 para Caja Inferior Oblicuo</i> |
| VE01-19 | 151896 | EE302800 | Housing, Lower Oblique Bearing <i>Caja Baja de Rodiamento Obliquo</i> |
| VE01-20 | 22520201 555048A DE5 | EE303860 | Washer, External Serrated Lock, 5mm (Unplated) <i>Arandela Dentado External, 5mm</i> |
| VE01-21 | 520022A HM5X25 | EE303720 | Screw, Hex Head Cap, 5X25 <i>Tornillo Hexagonal, 5X25</i> |
| VE01-22 | 130002 | EE302320 | Nut, Small <i>Tuerca Chica</i> |
| VE01-23 | 140002B | EE302380 | Lock Washer, Small <i>Arandela Chica de Retencion</i> |
| VE01-24 | 151380D | EE302500 | Stabilizer, Assembly Complete <i>Conjunto Completo de Estabilizador</i> |
| VE01-25 | 130010C | EE302340 | Nut, Stabilizer <i>Tuerca para Estabilizador</i> |



| Position | OEM Ref. Nos. | Epic No. | Description |
|-----------------|---|-----------------|---|
| VE01-26 | 140003C | EE302400 | Plate, Stabilizer Locking <i>Placa de Retencion para Estabilizador</i> |
| VE01-27 | 140001B | EE302360 | Lock Washer, Large <i>Arandela Grande de Retencion</i> |
| VE01-28 | 130001 | EE302300 | Nut, Large <i>Tuerca Grande</i> |
| VE01-29 | 559504A | EE304080 | Pin, Cylinder Roll, 3X10mm <i>Pasador Paralelo, 3X10mm</i> |
| VE01-30 | 520012A HM4X12 | EE303680 | Screw, Upper Cylinder <i>Tornillo para Cilindro Superior</i> |
| VE01-31 | 555047A DE4 | EE303840 | Washer, External Serrated Lock, 4mm <i>Arandela Dentado External, 4mm</i> |
| VE01-32 | 555036A ZU4 | EE303820 | Washer, Regular Flat, 4mm <i>Arandela Plana, 4mm</i> |
| VE01-33 | 2034301 536028B 536604B 950612 | EE303780 | Screw, Hex Socket Cone Point Set, 6X12 <i>Prisionero Cabeza Hexagonal Hueca con Punta Conica, 6X12</i> |
| VE01-34 | 151389G | EE302520 | Cylinder, R, U & G with Roll Pin & Set Screw <i>Cilindro R, U & G con Gurrón y opresor</i> |
| VE01-35 | 558063A | EE304060 | Ring, Cylinder Retaining (I 16K) <i>Retenador External para Caja Superior para Rodiamiento</i> |
| VE01-36 | 151830 | EE302780 | Plug, Nylon Cylinder O-Ring Type <i>Tapón de Nylon para Cilindro para Anillo "O"</i> |
| VE01-37 | 151390G | EE302522 | Plug, Nylon Cylinder, Standard <i>Tapón Normo de Nylon para Cilindro</i> |
| VE01-38 | 581021C | EE304520-1 | O-Ring, Cylinder for EE302780 Nylon Cylinder Plug <i>Anillo "O" para EE302780 Tapón</i> |
| VE01-38A | (581021C) 318581 | EE309044 | O-Ring 9.5 X 1.5mm <i>Anillo "O", 9.5 X 1.5mm</i> |
| VE01-40 | 151120B | EE302460 | Eyelet, Cylinder <i>Ojo Cerámico para Cilindro</i> |
| VE01-41 | 151907A01 | EE302880 | Tube, Centering <i> tubo para Centrajea</i> |
| VE01-42 | 580000A | EE304420 | Washer, Cylinder Wave <i>Arandela Ondulada</i> |
| VE01-43 | 558063A | EE304060 | Ring, Cylinder Retaining (I 16K) <i>Retenador External para Caja Superior para Rodiamiento</i> |
| VE01-44 | (151965A) | EE302940 | Axle, R Spindle <i>Eje de Huso "R"</i> |



| Position | OEM Ref. Nos. | Epic No. | Description |
|-----------------|--|-----------------|--|
| VE01-45 | 151433 | EE302540 | Cover, Spindle Dust <i>Protector de Polvo</i> |
| VE01-46 | 151435 | EE302545 | Ring, Spindle Dust <i>Anillo de Proteccion de Polvo para Huso</i> |
| VE01-47 | (152088A00) | EE303200 | Sleeve, Standard .100" Flanged, for Rebored Housing with O-Ring <i>Manga Norma Para Caja Reparada con Anillo "O" con Manga 0.100"</i> |
| VE01-48 | (152088A00) | EE303200-1 | Sleeve, for Relocation, .150" Flanged, for Rebored Housing with O-Ring <i>Manga para Relocalizacion, a con Anillo "O" con Manga 0.150"</i> |
| VE01-48A | (152088A00) | EE303200-2 | Sleeve for Damaged Housing, 0.150", Flanged, for Rebored Housing with O-Ring <i>Manga para Caja Danada, 0.150" a con Anillo "O" con Manga</i> |
| VE01-49 | 569028S | EE304220 | Bearing, R Spindle Housing, 3202 with Steel Cage <i>Rodamiento Doble de Bolas para Caja de Huso "R"</i> |
| VE01-50 | 318580 581158C R26PC85LJF X318580 | EE304540 | O-Ring for Spindle Housing <i>Anillo "O" para Caja de Huso</i> |
| VE01-51 | 318603 581188C | EE304530 | O-Ring 35 X 1.6 <i>Anillo "O", 35 X 1.6</i> |
| VE01-52 | 152045A00 | EE303120 | Spacer, for R and RM Spindles <i>Espaciador para Husos R y RM</i> |
| VE01-53 | 558027A C2035 | EE304020 | Ring, R Whorl Retaining (35I or C2.035) <i>Retenador Internal, 35mm</i> |
| VE01-54 | (440114C)-SKF 569061B DF0213LLU/15A | EE304242 | Bearing, R Whorl, NTN <i>Rodamiento Doble de Bolas para Nuez R</i> |
| VE01-55 | 151972A | EE303000 | Housing, R or RM Whorl,40mm <i>Caja de Nuez R y RM, 40mm</i> |
| VE01-56 | 151977A | EE303101 | Whorl Assembly,R or RM (NTN) <i>Conjunto de Nuez para Husos R & RM</i> |
| VE01-57 | 558005A C1015 | EE303900 | Ring, External, Retaining, (15E or C1.015) <i>Retenader External, 15mm</i> |
| VE01-58 | (151970D) | EE302980-1 | Clutch Cone Assembly, STEEL, R or RM, Hardened <i>Conjunto de Cono Acero para Freno Endurecido</i> |
| VE01-59 | 152053B | EE303140-4 | Clutch Cone Assembly, BRONZE, SA <i>Cono Completo de Bronce para Freno, "SA"</i> |
| VE01-60 | (581057A) | EE304535 | Fitting, Grease, for R Spindle Base <i>Pieza de Grasa para Huso Inferior "R"</i> |



| Position | OEM Ref. Nos. | Epic No. | Description |
|-----------------|--|-----------------|---|
| VE01-60 | 354797 581057A | EE309090 | Fitting, Grease, for Verdol Spindle Housing and Base Cap <i>Pieza de Grasa</i> |
| VE01-61 | 120002H | EE302280 | Screw, Hardened Cam <i>Tornillo Endurecido para Cerrojo</i> |
| VE01-62 | 151788A01 | EE302720 | Wire Handle Assembly <i>Conjunto de Asa de Alambre</i> |
| VE01-63 | 151975B 151975B00 151975 | EE303060 | Sleeve, R Cam (Hardened) (Does Not Require Wear Pad) <i>Manga Endurecida para Cerrojo sin Cojincillode Usc</i> |
| VE01-64 | 151975B | EE303080 | Sleeve, R Cam (Hardened) with Hardened Cam Screws <i>Manga Endureada para Cerrojo "R" con Tornillos de Cerrojo</i> |
| VE01-65 | (VD000330) 151975A | EE303082 | Sleeve, R Cam (Hardened) With Wear Pad <i>Manga Endureaida para Cerrojo "R" con Cojincillo de USO</i> |
| VE01-66 | 151973A | EE303020 | Washer, Steel, for R, RM & F44 Spindle <i>Arandela Acero para Husos R, RM y F44</i> |
| VE01-67 | 212408 558006A C1016 | EE304040 | Ring, External Retaining, 16mm (16E or C1.016) <i>Retenador External, 16mm</i> |
| VE01-68 | (117143A00) 117068 92501003 X92501003 | EE302040 | Spring, Spindle for R, U, & G Spindle (also used for Balloon Centering Guide) <i>Resorte para Husos R, U & G y Guia de Balon</i> |
| VE01-69 | 151974A03 | EE303040 | Spacer, Spring <i>Espacador - Resorte</i> |
| VE01-70 | 212671 558002A C1010 | EE303880 | Ring, External Retaining, (10E or C1.010) <i>Retenador External, 10mm</i> |
| VE01-71 | 569063S | EE304260 | Bearing, R& RM Spindle Base, 6200 (Open) <i>Rodamiento de Bolas 6200 para Huso Inferior, "R" y "RM"</i> |
| VE01-72 | 318597 581012C | EE304480 | O-Ring, R Base <i>Anillo "O" para Huso Inferior "R"</i> |
| VE01-73 | 152087A01 151976A01 | EE303180 | Cap, Bottom Housing, with O-Ring & Grease Fitting <i>Cubierta Inferior de Caja con Anillo "O" y Pieza de Grasa</i> |
| VE01-74 | 22520201 555048A DE5 | EE303860 | Washer, External Serrated Lock, 5mm (Unplated) <i>Arandela Dentado External, 5mm</i> |
| VE01-75 | 20283401 524509B HICM5X16 | EE303760 | Screw, Socket Head Cap, 5X16 <i>Tornillo Cilindrico, 5X16</i> |
| VE01-76 | (152084A00) | EE303115 | Sleeve, Repair, for Lower Spindle Housing <i>Manga a Repara Caja de Huso Interior</i> |



| Position | OEM Ref. Nos. | Epic No. | Description |
|-----------------|----------------------|-----------------|---|
| VE01-77 | (152084A00) | EE303116 | Sleeve, Repair, Lower Spindle Housing <i>Manga a Repara Caja de Huso Interior</i> |
| VE01-78 | 152074A | EE303160 | Cover, Dust, Plastic <i>Protector Plastico de Polvo</i> |
| VE01-79 | (581057A) | EE304535 | Fitting, Grease, for R Spindle Base <i>Pieza de Grasa para Huso Inferior "R"</i> |
| VE01-79 | 354797 581057A | EE309090 | Fitting, Grease, for Verdol Spindle Housing and Base Cap <i>Pieza de Grasa</i> |
| VE01-80 | Not Applicable | EE304820V | Grease, Spindle Bearing, Kluber, 1 Kilo (Not Shown) <i>Grasa Sintetica para Rodamientos de Huso (por Kilo)(No Ilustrado)</i> |
| VE01-81 | Not Applicable | EE304823 | Grease, R Axle Spline (30CC Syringe) (Not Shown) <i>Gasa para ranvras de Eje de Huso en Jeringa de 30cc (No Ilustrado)</i> |
| VE01-82 | Not Applicable | EE304821 | Grease, R Axle Spline, Kluber (1 Kilo Can) (Not Shown) <i>Grasa para Ronvros de Eje de Huso, 1kg. (No Ilustrado)</i> |
| VE01-83 | Not Applicable | EE304822 | Loctite RC/609-21, 10 ml. Bottle for securing spindle bearings (Not Shown) <i>Cola Loctite RC/609-21 para sequiridad de rodamientos de Huso, 10ml.</i> |
| VE01-84 | 151980A00 | EE309096 | Axle, R, and Cylinder Assembly <i>Conjunto de Eje "R" y Cilindro Completc</i> |

Epic products are intended as replacements for worn or damaged parts in OEM products. OEM Part numbers in (parenthesis) indicate either 1) Improved design 2) the part serves the same function as the OEM part, but may differ from the OEM design, or 3) it is a component of an assembly where no OEM reference number is available, or 4) it is a repair service for the referenced OEM part.

Parts with EE designations are manufactured by Epic and are not authorized by the original equipment manufacturers.

The information herein falls within the normal range of product properties and is based on typical usage results within the industry of the products. Epic assumes no obligation or liability for any advice or information supplied by Epic. The user assumes all responsibility for determining the results and suitability of the products within the user's plant. All such information is provided gratis and user assumes sole responsibility for results obtained.

Volkman is a trademark of Saurer AG. Verdol is a trademark of ICBT.

EE is an Epic trademark designating Epic parts.

Verdol is a trademark of Rieter/ ICBT

© Epic Enterprises, October 2005

